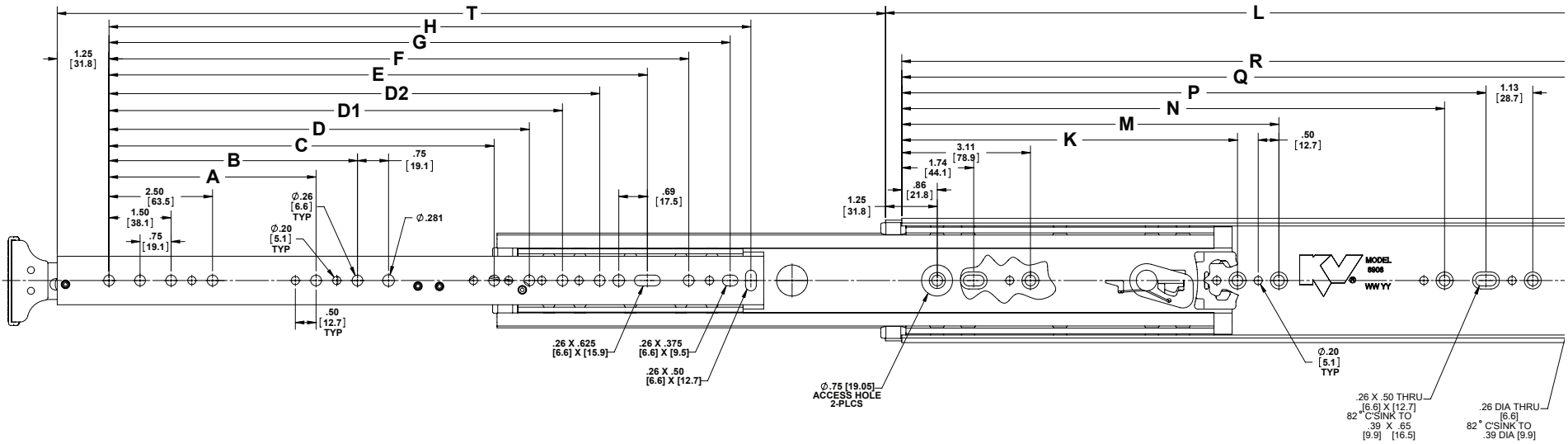


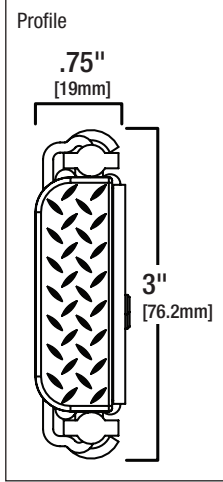


KNAPE & VOGT

# 8909 Extra Heavy-Duty Full-Extension Lock-out Drawer Slide



Size	A	B	C	D	D1	D2	E	F	G	H	K	M	N	P	Q	R
10" *																
12"	—	—	—	—	—	—	—	—	—	7.81 [198.4]	—	—	—	8.00 [203.2]	10.25 [260.4]	11.00 [279.4]
14"	—	—	—	—	—	—	—	—	9.06 [230.1]	9.81 [249.2]	—	—	—	10.00 [254.0]	12.25 [311.2]	13.00 [330.2]
16"	5.00 [127.0]	—	—	—	—	—	—	10.06 [255.5]	11.06 [280.9]	11.81 [300.0]	—	—	—	12.00 [304.8]	14.25 [362.0]	15.00 [381.0]
18"	5.00 [127.0]	—	—	—	—	—	—	12.06 [306.3]	13.06 [331.7]	13.81 [350.8]	—	—	—	14.00 [355.6]	16.25 [412.8]	17.00 [431.8]
20"	5.00 [127.0]	7.50 [190.5]	—	—	—	—	—	14.06 [357.1]	15.06 [382.5]	15.81 [401.6]	—	—	—	16.00 [406.4]	18.25 [463.6]	19.00 [482.5]
22"	5.00 [127.0]	7.50 [190.5]	—	—	—	—	13.69 [347.7]	16.06 [407.9]	17.06 [433.3]	17.81 [452.4]	—	—	—	18.00 [457.2]	20.25 [514.4]	21.00 [533.4]
24"	5.00 [127.0]	7.50 [190.5]	—	—	—	—	15.69 [398.5]	18.06 [458.7]	19.06 [484.1]	19.81 [503.2]	—	—	—	20.00 [508.0]	22.25 [565.2]	23.00 [584.2]
26"	5.00 [127.0]	7.50 [190.5]	—	—	—	—	17.69 [449.3]	20.06 [509.5]	21.06 [534.9]	21.81 [554.0]	—	—	—	22.00 [558.8]	24.25 [616.0]	25.00 [635.0]
28"	5.00 [127.0]	7.50 [190.5]	—	—	—	—	19.69 [500.1]	22.06 [560.3]	23.06 [585.7]	23.81 [604.8]	—	—	—	24.00 [609.6]	26.25 [666.8]	27.00 [685.8]
30"	5.00 [127.0]	7.50 [190.5]	—	—	—	—	21.69 [550.9]	24.06 [611.1]	25.06 [636.5]	25.81 [655.6]	9.25 [235.0]	—	19.75 [501.7]	26.00 [660.4]	28.25 [717.6]	29.00 [736.5]
32"	5.00 [127.0]	7.50 [190.5]	—	—	—	—	23.69 [601.7]	26.06 [661.1]	27.06 [687.3]	27.81 [706.4]	9.25 [235.0]	15.50 [393.7]	21.75 [552.5]	28.00 [711.2]	30.25 [768.4]	31.00 [787.4]
34"	5.00 [127.0]	7.50 [190.5]	—	18.50 [469.9]	—	—	25.69 [652.5]	28.06 [712.7]	29.06 [738.1]	29.81 [757.2]	9.25 [235.0]	16.50 [419.1]	23.75 [603.3]	30.00 [762.0]	32.25 [819.2]	33.00 [838.2]
36"	5.00 [127.0]	7.50 [190.5]	—	20.50 [520.7]	—	—	27.69 [703.3]	30.06 [763.5]	31.06 [788.9]	31.81 [808.0]	9.25 [235.0]	17.50 [444.5]	25.75 [654.1]	32.00 [812.8]	34.25 [870.0]	35.00 [889.0]
40"	5.00 [127.0]	7.50 [190.5]	14.50 [368.3]	—	—	—	31.69 [804.9]	34.06 [865.1]	35.06 [890.5]	35.81 [909.6]	9.25 [235.0]	21.50 [546.1]	29.75 [755.7]	36.00 [914.4]	38.25 [971.6]	39.00 [990.6]
42"	5.00 [127.0]	7.50 [190.5]	14.50 [368.3]	—	—	—	33.69 [855.7]	36.06 [915.9]	37.06 [941.3]	37.81 [960.4]	9.25 [235.0]	21.50 [546.1]	31.75 [806.5]	38.00 [965.2]	40.25 [1022.4]	41.00 [1041.4]
44"	5.00 [127.0]	7.50 [190.5]	14.50 [368.3]	20.50 [520.7]	—	—	35.69 [906.5]	38.06 [966.7]	39.06 [992.1]	39.81 [1011.2]	9.25 [235.0]	21.50 [546.1]	33.75 [857.3]	40.00 [1016.0]	42.25 [1073.2]	43.00 [1092.2]
48"	5.00 [127.0]	7.50 [190.5]	14.50 [368.3]	20.50 [520.7]	32.50 [825.5]	—	39.69 [1008.1]	42.06 [1068.3]	43.06 [1093.7]	43.81 [1112.8]	9.25 [235.0]	23.50 [596.9]	37.75 [958.9]	44.00 [1174.8]	46.25 [1174.8]	47.00 [1193.8]
60"	5.00 [127.0]	7.50 [190.5]	14.50 [368.3]	20.50 [520.7]	32.50 [825.5]	44.50 [1130.3]	51.69 [1312.9]	54.06 [1373.1]	55.06 [1398.5]	55.81 [1417.6]	9.25 [235.0]	23.50 [596.9]	37.75 [958.9]	56.00 [1422.4]	58.25 [1479.6]	59.00 [1498.6]



\*10" size is special order only

**Product:** Extra Heavy-Duty Full-Extension Lock-out Drawer Slide

**Mounting:** Side

**Clearance:** .75" (+.030, -.030)

**Load Rating:** Up to 500 lbs. (based on application)

**Height:** 3" (+.020, -.020)

**Finish:** Zinc Plated

**Action:** Full Extension

**Hardware Options:** Cabinet members with .26" (6.6mm) holes: Use 1/4" or [M6 Euro] flat, hex or pan-head screw  
Cabinet members with .20" (5.2mm) holes: Use #10 or [M5 Euro] flat, hex or pan-head screw  
Drawer members with .26" (6.6mm) holes: Use 1/4" or [M6 Euro] hex, pan-head or button-head screw  
Drawer members with .20" (5.2mm) holes: Use #10 or [M5 Euro] hex, pan-head or button-head screw  
Maximum screw head height: .15" [4.8mm] ; Maximum screw head diameter: .50" [12.7mm]

**Notes:** This slide must never be used as a pullout step, platform or any other application supporting human weight as injury may result. When installing 8909 slides in the flat orientation it is best to place a 1/16" thick shim between the drawer member and the drawer bin. This shim is to improve clearance so that the drawer bin does not interfere with the cabinet member under heavier loads.

**Sizes:** 10" (special order), 12", 14", 16", 18", 20", 22", 24", 26", 28", 30", 32", 34", 36", 40", 42", 44", 48", 60"

**Packaging:** Bulk pack (8909B):  
10"\* to 20" 8 slides per box  
22" to 28" 6 slides per box  
30" to 36" 4 slides per box  
40", 42", 44", 48", 60" 2 slides per box

Bulk Pack: Slides and 1 set of instructions per box. No mounting hardware.

**Load Ratings:**

- 500 Pound Load Rating – Moderate Use
- 400 Pound Load Rating – Frequent use
- 300 Pound Load Rating – Mobile or Vehicular Use
- 100 Pound Flat Load Rating – Flat Orientation Applications

\*10" size is special order only

